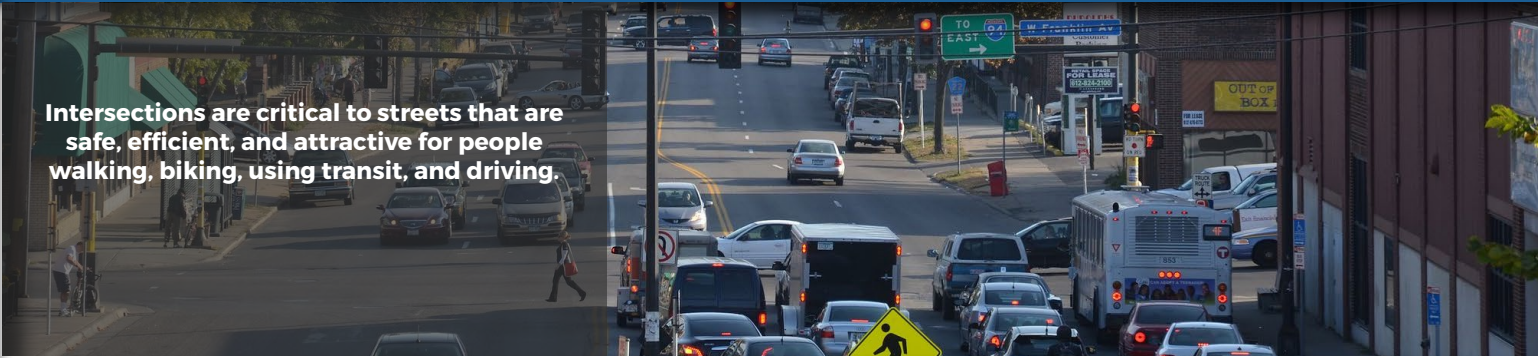


Intersections are critical to streets that are safe, efficient, and attractive for people walking, biking, using transit, and driving.



INTERSECTIONS INTRODUCTION AND GENERAL GUIDANCE

Intersections are critical to streets that are safe, efficient, and attractive for people walking, biking, using transit, and driving. The most serious conflicts between modes happen at intersections and more than 80% of crashes in Minneapolis happen at intersections.

Intersection design should support visibility and predictability for all modes and should prioritize people walking, biking, and transit per the Minneapolis Complete Streets policy. Intersections should be designed to:

- Be as compact as possible to reduce exposure for pedestrians and bicyclists and to slow turning traffic;
- Provide clear space for each mode and predictable conflict points that are well managed;
- Be accessible for people with disabilities; and
- Minimize obstructions that limit visibility and provide good street lighting.