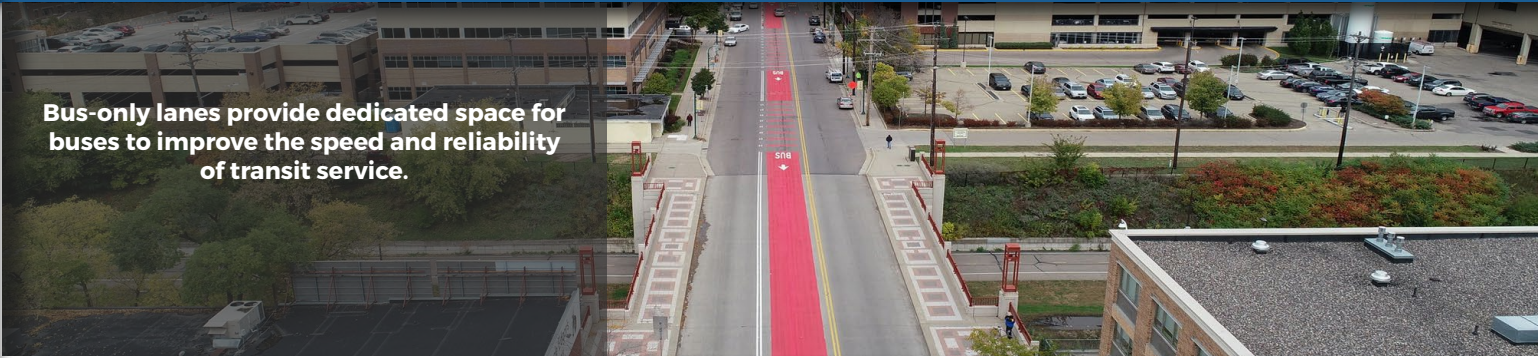


Bus-only lanes provide dedicated space for buses to improve the speed and reliability of transit service.



INTRODUCTION

Bus-only lanes provide dedicated space for buses to improve the speed and reliability of transit service. They may be implemented for a select period of time or throughout the entire day depending on context. They can be implemented as part of street reconstruction or street retrofit projects. The Transportation Action Plan includes [specific locations](#) for implementation and evaluation for bus-only lanes. Other corridors may be considered on a case-by-case basis.

DESIGN CONSIDERATIONS

See also [transit stops guidance](#).

A. Location	Bus-only lanes can be implemented along the curb, in through lanes that are not curbside, or be center running.
B. Width	Curbside bus-only lanes should typically be 10' wide in addition to an adjacent 2' gutter. Non-curbside bus-only lanes should typically be 11' wide.
C. Coordination with other transit advantages	Bus-only lanes should typically be implemented in combination with other transit advantages along a corridor, such as transit signal priority and queue jumps.
D. Color	Bus-only lanes can be painted red to provide additional visibility and clarity for drivers.